



Center for Maine Contemporary Art

162 Russell Avenue, PO Box 147, Rockport, Maine 04856
Tel: 207.236.2875 Fax: 207.236.2490 www.cmcanow.org

2008 Biennial Juried Exhibition

August 9-October 4, 2008

Related Events:

Friday, August 8, 5-7 pm

Saturday, August 9, 2 pm

Sunday, September 7, 2 pm

Opening Reception

Distinguished Lecture with Carole Anne Meehan

\$3 CMCA Members / \$5 Nonmembers

Roundtable Discussion

free for CMCA Members or with admission

For Immediate Release

CMCA Celebrates the Current State of Maine Art in its 2008 Biennial

The Center for Maine Contemporary Art (CMCA) will open the doors to its *2008 Biennial Juried Exhibition* on Friday, August 8 with an opening reception from 5-7:00 pm. This exhibition will be on view until October 4, 2008. On Saturday, August 9, at 2:00 pm, Carole Anne Meehan, one of this year's Biennial jurors, will give a distinguished lecture about artists in the Biennial and various approaches to landscape. Admission is \$3 for CMCA members and \$5 for nonmembers. On Sunday, September 7, at 2:00 pm, CMCA will host several Biennial artists for a roundtable discussion. Admission is free for members or with admission.

The CMCA *2008 Biennial Juried Exhibition* marks a significant moment in the cultural life of Maine. CMCA has been organizing annual or biennial juried

exhibitions since 1978; in this long history of showcasing the best of Maine art, many distinguished artists and jurors have participated in the process. This year the jurors were Carole Anne Meehan, curator at the Institute of Contemporary Art in Boston; Scott Peterman, a well-known Maine photographer; and Andrea Pollan, founder and director of Curator's Office in Washington, DC.

This year an unprecedented number of artists—737—submitted images of their work for review by the jurors. Over the course of two days the jurors reviewed hundreds of digital images and artists' statements, and finally selected 103 works of art by 89 artists to be displayed on two floors of CMCA.

The Biennial Jurors' Prize—a small solo exhibition the following year—is usually given to an emerging and especially promising artist. This year, Melinda Barnes was awarded this honor, and her exhibition will open in early January of 2009. Barnes is known for her delicate drawings of fictitious scenes and objects. The jurors also gave honorable mentions to Kate Beck, Joshua Ferry, and Anna Hepler.

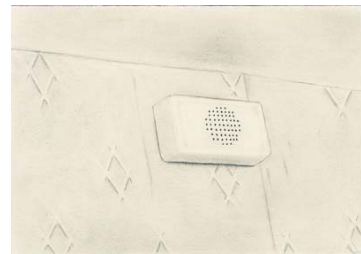
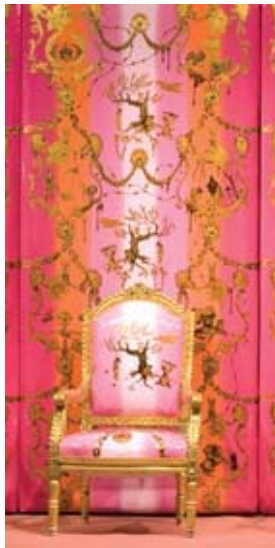
After reviewing the submissions, the jurors stated: "It came as no surprise that the desire to evoke and celebrate Maine's rugged natural beauty through various approaches to landscape engages many artists who live and work here. We saw examples of this ranging from the very traditional to the highly experimental, and would encourage all to continue to boldly push the boundaries of the genre."

For the first time CMCA published a four-color catalogue in conjunction with the Biennial. This comprehensive 100-page publication includes an image for each artist, artists' statements and resumes, as well as the jurors' statement and a brief introduction by curator Britta Konau. It can be purchased through CMCA's gift shop.

Following is a complete list of artists included in the *CMCA 2008 Biennial Juried Exhibition*: Judith Allen-Efstathiou, Dorette Marie Amell, Susan Amons, Ethan Andrews, Debra L. Arter, Jeff Badger, Greta Bank, Eline K. Barclay, Melinda Barnes, Kate Beck, Christopher Becker, Dyan Berk, Jen Blackstone, Stacey Cramp, Daniel E. Davis, Nancy R. Davison, Lenora Ditzler, Kyle Downs, Nicole Duennebier, Ingrid Ellison, Terence Falk, Allyson Fauver, Joshua Ferry, Clint Fulkerson, Alina Gallo, Jefferson Goolsby, Roberta Goschke, Meggan Gould, Barbara Hadden, Heather Hagle, Nancy Harris, Connie Hayes, Blake Hendrickson, Anna Hepler, Adriane Herman, Jennifer Hodges, Matt Hutton, Jeffrey Jennings, Leon Johnson, Christopher Keister, Jeff Kellar, Sarah Knock, Noah Krell, Anne Krinsky, Tanja Kunz, Steven Langerman, Jonathan Levitt, Sage Lewis, Karen MacDonald, James B. Marshall, Andrea Martens, Patrisha McLean, Tyler McPhee, Don Justin Meserve, Susan Metzger, Garry Mitchell, Elke Morris, Kerry O'Connor, Blake Ogden, Jan Owen, Yeshe Parks, Christopher D. Peary, Kate Philbrick, Patrick Plourde, Benjamin B. Potter, Svetlana Prudovskaya, Shannon Rankin, Wesley Reddick, R. Keith Rendall, Ellen Rich, Robert N.

Richardson, Justin Richel, Nettie Locke Rogers, Cara Romano, Kenneth Schiano, David Segre, Owen F. Smith, Bridget Spaeth, Mara Sprafkin, Kathy Snow Stratton, Misha Tomic, Justin Van Soest, Noa Warren, John Whalley, Lucy White, Shoshannah White, David Wolfe, Henry Wolyniec, and Jeff Woodbury.

The *2008 Biennial Juried Exhibition* is made possible in part by support from The Country Inn at Camden/Rockport.



left to right: Benjamin B. Potter, Greta Bank, Melinda Barnes

The Center for Maine Contemporary Art (CMCA) is a nonprofit organization advancing contemporary art in Maine through exhibitions and educational programs. CMCA is located at 162 Russell Avenue in downtown Rockport. Hours are Tuesday through Saturday, 10am-5pm. Sunday, 1-5 pm. Closed Monday. General admission is \$5.00. Admission is free for members, Rockport residents and children. The facilities are fully wheelchair accessible. For more information phone 207-236-2875 or consult the website at www.cmcanow.org.